

CWA

FIRM PROFILE



Residential

CWA (CW ASSOCIATES, PLLC) is a Professional Architectural, Planning and Development Services Company that works with individuals, builders, investors, developers and companies on both Residential and Commercial projects.

We are the clients advocate for “**Crafting Spaces, Achieving Sustainability and Creating Value**” while meeting the demands of the market place and linking the present with the past. CWA achieves this with Vision to Reality planning.



Sustainability

Careful listening of the client's desires helps tailor the design to a solution that offers successful results. CWA has the knowledge, skill and experience to create and manage your project and achieve your goals.

We develop a project team of professionals suited to your project. CWA's network team of Design, Engineering and Construction Professionals will focus on the client's desires to achieve a successful project.



Commercial

Developing and assisting with the project from Initial Program, Concept Design Visioning, Sustainability Scoping, Entitlement, Construction Documents, Permit and Construction Administration are the core of CWA's Professional Services. For a further offering of CWA's professional services, reference CWA Design Services description.

Utilizing the latest in design technology along with traditional design methods help to communicate effectively during the the design and construction process, which results in a efficient quality project delivery.



Renovation

CWA stresses design excellence balanced by meticulous project management. CWA offers productive personal attention to each client with fresh and creative ideas.

We look forward to hearing from you to discuss your project's dreams and desires.

Chip Weincek, AIA
Architect/Planner
chip@cwa-architect.com

CW ASSOCIATES, PLLC
ARCHITECTURE • PLANNING • DEVELOPMENT SERVICES
303-666-8941 www.cwa-architect.com

CWA

residential today



crafting spaces

Great Room



Single Family



Multi-Family



Visioning



Renovation

“Crafting Spaces, Achieving Sustainability and Creating Value” are common threads CWA carries throughout its projects.

We look forward to hearing from you to discuss your project's dreams and desires.



Sustainability



Baths

Solar



Kitchens

CW ASSOCIATES, PLLC
ARCHITECTURE • PLANNING • DEVELOPMENT SERVICES
303-666-8941 www.cwa-architect.com

CWA

commercial today



Renovation



High Performance

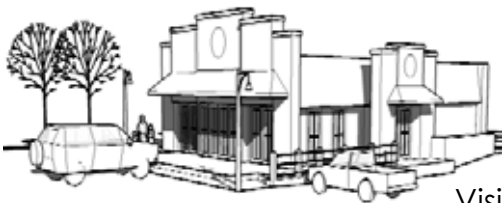
making places



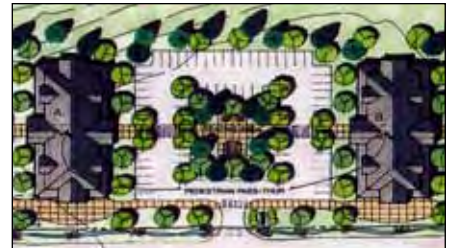
Mixed-Use



Conference



Visioning



Planning



Tenant Finish

“Crafting Spaces, Achieving Sustainability and Creating Value” are common threads CWA carries throughout its projects.

We look forward to hearing from you to discuss your project's dreams and desires



Office

CW ASSOCIATES, PLLC
ARCHITECTURE • PLANNING • DEVELOPMENT SERVICES
303-666-8941 www.cwa-architect.com

CWA

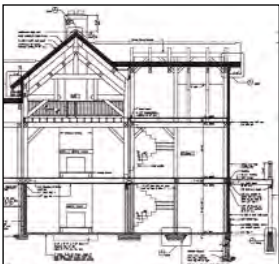
DESIGN SERVICES



Planning



Visioning



Documentation



Construction

CWA encourages the clients to share their dreams of what they envision to be built. CWA will listen to the clients desires to better understand their needs and help develop a process/program that meets the project's requirements, budget and schedule. CWA works well in either a design/build negotiation or design/bid/build process.

CWA's professional services are customized to each project and generally include the following processes and services:

- **Planning** Establishing and/or review the client's project program requirements and budget. Outline the governmental requirements, processes, sustainability scope and schedule for project entitlement and client's needs. Develop a conceptual site plan and program that reflects the project requirements.
- **Vision/Design** Explore multiple design concepts and develop the overall design vision and project direction that compliments the clients desires. Generate 3D computer models, renderings, floor plans, building elevations and sections as required to convey the design vision.
- **Approvals/Entitlements** Develop the appropriate documents and will assist in the coordination of consultants, for submittals to receive approvals and entitlements, to build the project. Approvals and entitlements vary from project to project and may include: Site Review, Design Review, Planning/City Council, HOA, Variances and PUD's to name a few.
- **Construction Documents** Generates the appropriate documents and coordinating the consultants to produce the construction documents that represent the design layout and details for pricing, building permit and construction.
- **Pricing & Negotiation** Develop bid documents to accept pricing and negotiate contracts for construction.
- **Construction Administration** Assist with submittal review, change order requests, shop drawing approval, pay application acceptance and project field observation for compliance to the construction documents.

CWA looks forward to working on a successful project with you.

CW ASSOCIATES, PLLC
ARCHITECTURE • PLANNING • DEVELOPMENT SERVICES
303-666-8941 www.cwa-architect.com

CWA



PRINCIPAL PROFILE

Chip Weincek, AIA **Architect / Planner**

Chip Weincek, AIA, Owner/Principal of CWA - Architects and Planners, has been assisting clients with Architectural, Planning and Development Professional Services for over 25 years.

Working with a diverse group of clients both on residential and commercial projects, Chip has a successful history with setting the design direction and bringing together the right team to achieve the client's desires. In 2003 Chip formed CWA and continues today in **"Crafting Spaces, Achieving Sustainability and Creating Value"** for its clients. Chip's been fortunate to design both residential and commercial projects consisting of custom single family residences, residential renovation/remodel, tenant finish, senior living, aging in place, condominiums, retail, historical re-use, hotel, renovation, office and resort. Chip has been licensed to practice Architecture since 1985.

Constructing a residence in building trades at Naperville Central High School in Illinois, sparked Chip's interest in the built environment. Chip pursued this interest through an Associates Degree Program in Architecture at Southern Illinois University. Chip's environmental and sustainability design training began in the early 80's with Chip receiving his Bachelors of Environmental Design degree from the University of Colorado, Boulder. Chip continued his architectural educational pursuit and received his Masters of Architecture from the University of Colorado, Denver and was awarded the Honor Thesis Awards for Excellence in Architectural Design.

Chip's professional career began with Westland Development a Design/Build firm with Architecture, General Contracting, Real Estate and Development services for corporate clients. Chip furthered his career working with the Architectural and Planning firms of; Midyette/Seieroe, ESA and DTJ Design. For a further review of Chip's architecture and sustainability work, please see CWA's website projects.

Outside CWA, Chip, his wife and two daughters enjoys all Colorado has to offer while skiing, camping, biking and hiking.

Other: Member American Institute of Architects (AIA)
Excellence in Architectural Design - Honor Thesis Award
License to Practice Architecture in Colorado
Member Colorado Historical Society
Member Louisville Chamber of Commerce
Member Boulder Links
Building Enclosure Council (BEC) of Colorado

CW ASSOCIATES, PLLC
ARCHITECTURE • PLANNING • DEVELOPMENT SERVICES
303-666-8941 www.cwa-architect.com



TESTIMONIALS - 1

Chip Weincek has been fortunate to be associated with the following clients, mentors and friends during his journey as an architect:

"The project that he worked with was programming, site plan, and architectural design of a twenty unit townhouse development for a real client at Manitou Springs. The project emphasis was to provide for passive solar design within definite site and budgetary constraints. Among the five students who worked with that project, Weincek produced the most imaginative as well as the most complete planned and architecturally developed solution."

David L. Paulson
Professor/Architect
University of Colorado, Boulder - Environmental Design

"I have found Chip enjoyable to work with both as a person and professional. His abilities exceed those of most at his level. His mature sense of responsibility, professional attitude and all over high level of technical competence have recently lead to him being given the status job captain and project coordinator."

Jere D. Eggleston
Principal Architect
Westland Development Services, Inc., Boulder, Colorado

"Although these projects have been extremely complicated and at times frustrating, the excellent performance and cooperation between Chip Weincek, and our Chuck Smith, have provided the owners with a standard of quality unsurpassed in this industry. Chip Weincek has demonstrated throughout these projects a thorough knowledge of construction techniques, professionalism in handling disputes and an unequaled ability to coordinate the construction phases. His protection of the owners and your firm against future project liabilities has truly impressed me and should be an asset to your company"

Terry J. Townson
Vice President
General Contracting - Riviera Beach, Florida
*Projects: Three Highrise Condominium Towers and Thirtyfive
Marina Suites Sarasota & Longboat Key, Florida*

CW ASSOCIATES, PLLC
ARCHITECTURE • PLANNING • DEVELOPMENT SERVICES
303-666-8941 www.cwa-architect.com



TESTIMONIALS - 2

"I would be remiss if I did not take the time to commend Chip Weincek for his contribution to the remedial work of our Sarasota and and Georgetown properties. To say that the work would not have been done without his involvement would be an inaccurate statement. To say that his involvement made a difficult and frustrating projects easier is a fact. Chip is truly an asset to your firm and an impressive representative of the architectural profession"

Donald G. Reeves, CPM
Asset Manager
Dutch Institutional Holding Company, Inc. (DIHC) Atlanta, Georgia
Projects: 888 The Condominiums on the Bay and The Beaches
Condominiums, Florida
The Flour Mill Georgetown, Washington, DC

"Thank you for ten years of service with ESA. Your continued support, hard work and positive attitude have been much appreciated by your fellow staff and clients. It has been a true pleasure to have had the opportunity to work with you for the past ten years and I look forward to many in the future."

Eric Smith, AIA
President
ESA - Boulder and Steamboat Springs, Colorado

"In conclusion we think your home, as completed, is very attractive....."

The Highlands at Breckenridge
Design Review Board
Breckenridge, Colorado
Project: New Residence

"We are very pleased with your final design and the final results. We thank you not only for the fine design and well documented plans, but also for the support and oversight during construction. It was good to know that you stayed involved throughout the project and kept our needs and interests at the forefront of the project."

Ray and Penny Bertrand
Owners
Boulder, Colorado
Project: Full Residence Renovation and Addition

CW ASSOCIATES, PLLC
ARCHITECTURE • PLANNING • DEVELOPMENT SERVICES
303-666-8941 www.cwa-architect.com