

# CWA



After

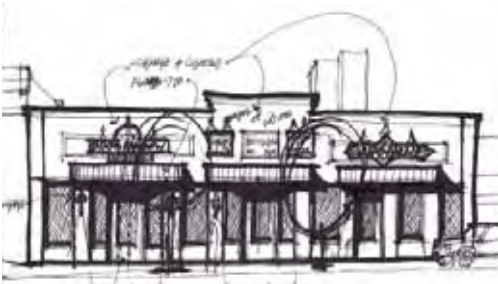


Construction

## BOGGS BUILDING RESTORATION

Steamboat Springs, CO

Exterior Storefront and Interior  
Renovation of a Historic Old Town  
Steamboat Commercial Building, Divided  
into Commercial Condos with New  
Structural, M/E/P, New Entry Ways,  
Signage and Lighting



Concept

### **Sustainability Features:**

- Day lighting
- Water saver plumbing fixtures
- Dimmer lighting controls
- Double pane insulated glass storefront
- Low VOC finishes
- Recycle and reused materials
- Well insulated
- Energy efficient HVAC rooftop units with fresh air economizer



Before



After

## **CW ASSOCIATES, PLLC**

**ARCHITECTURE • PLANNING • DEVELOPMENT SERVICES**

**303-666-8941 www.cwa-architect.com**

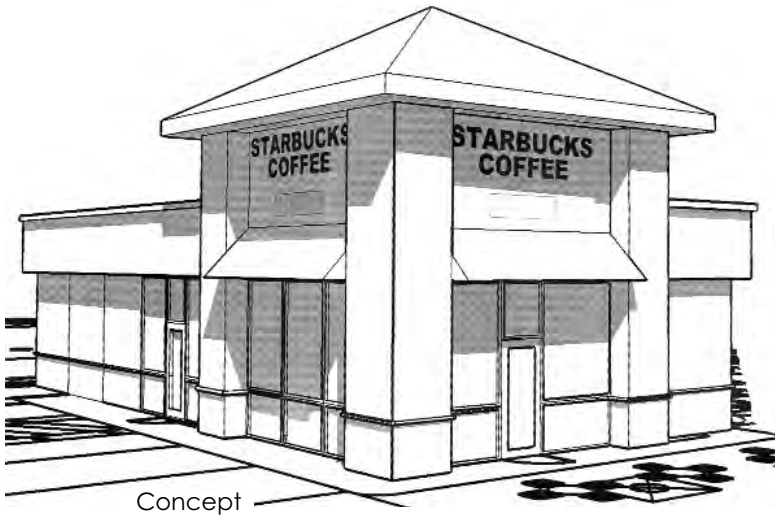
# CWA



## **STARBUCKS COFFEE**

Thornton, CO

Conversion of a Existing Gas Station into a Coffee Shop with a Drive Thru.



Before



### **Sustainability Features:**

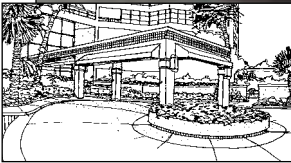
- Double pane insulated glass storefront
- Water saver plumbing fixtures
- Lighting with high efficient bulbs and controls
- High performance building envelope
- Low VOC finishes
- Energy efficient HVAC rooftop units with fresh air economizer and setback controls
- Drainage and runoff control detention purification
- EPA gas station cleanup

## **CW ASSOCIATES, PLLC**

ARCHITECTURE • PLANNING • DEVELOPMENT SERVICES

303-666-8941 [www.cwa-architect.com](http://www.cwa-architect.com)

# CWA



## 888 BOULEVARD OF THE ARTS

Sarasota, FL

Renovation of Two 18 Story Residential High Rise Towers and 35 Marine Suite Townhomes. Building Envelope, Corridors, Lobbies, Porte-Cochere, Gate House and Unit Renovations. Previous Experience of Chip Weincek with ESA

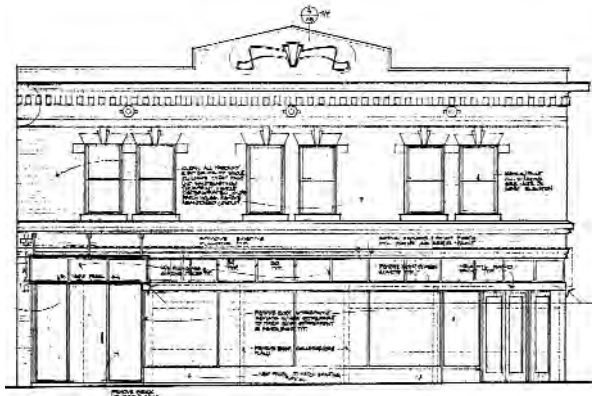


## **CW ASSOCIATES, PLLC**

**ARCHITECTURE • PLANNING • DEVELOPMENT SERVICES**

**303-666-8941 [www.cwa-architect.com](http://www.cwa-architect.com)**

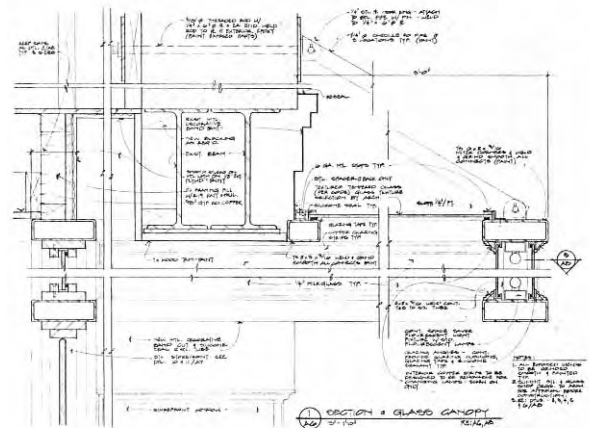
# CWA



## **TANNER BUILDING**

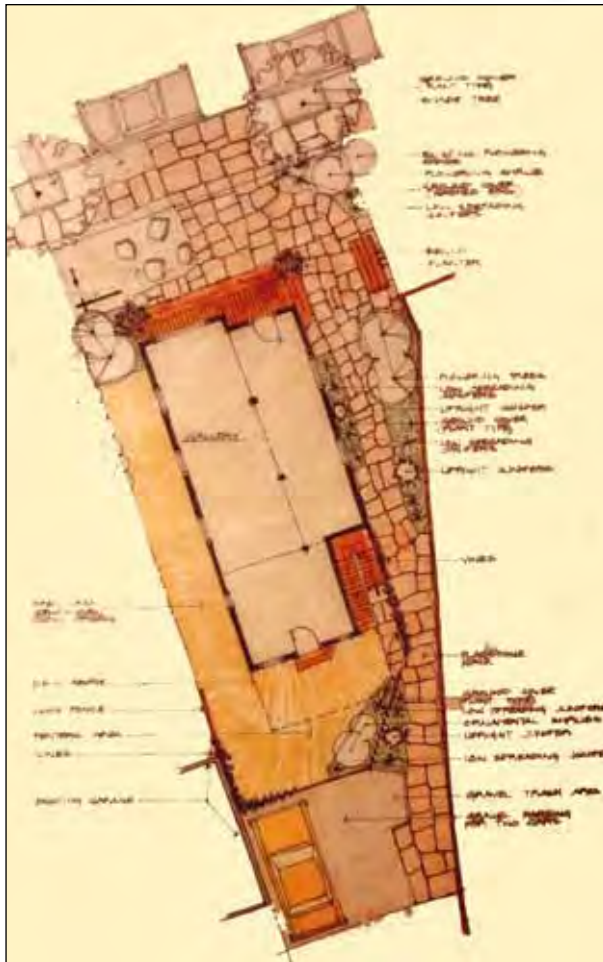
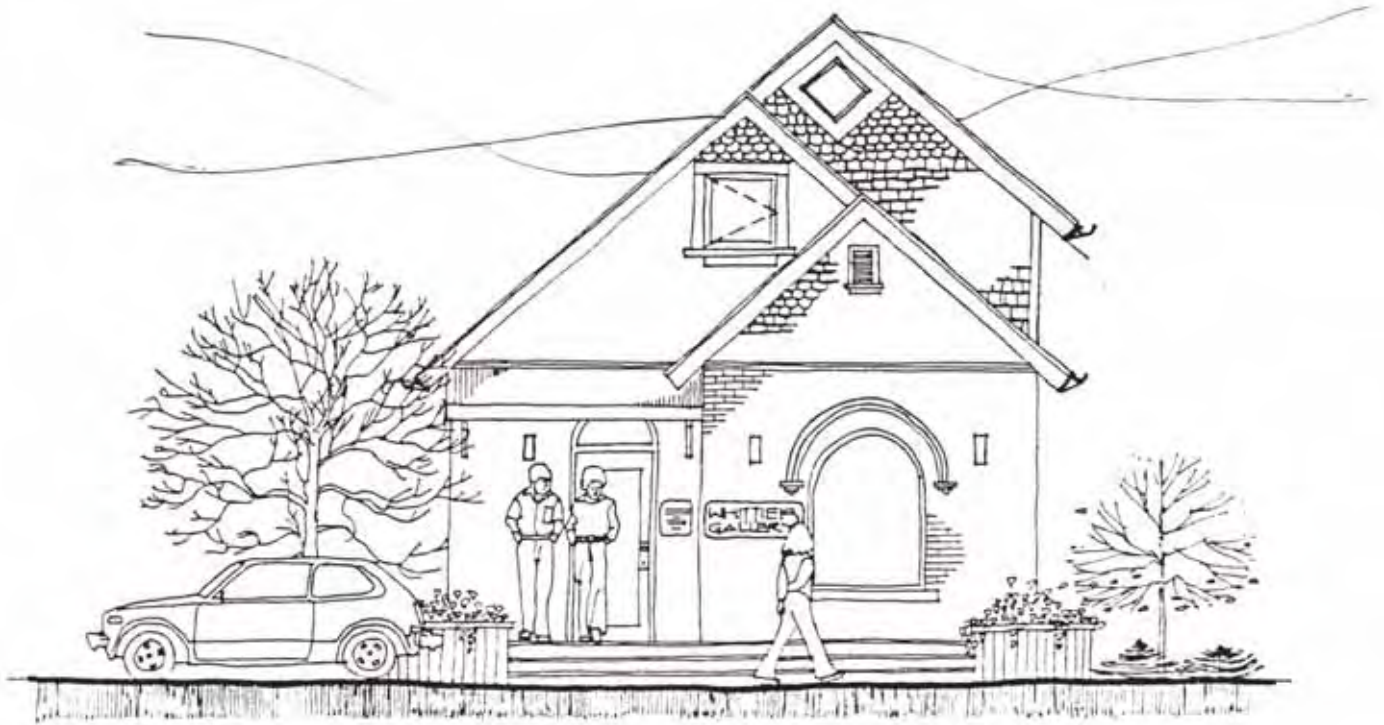
Boulder, Colorado

Renovation of the Exterior and Interior of a Pearl Street Mall Historical Property for New Professional Offices, Shops and Cafe. Previous experience of Chip Weincek with MSA



**CW ASSOCIATES, PLLC**  
ARCHITECTURE • PLANNING • DEVELOPMENT SERVICES  
303-666-8941 [www.cwa-architect.com](http://www.cwa-architect.com)

# CWA



## WHITTIER GALLERY

Boulder, CO

Historical Renovation of a  
Single Family Bungalow to  
an Art Gallery and Living Unit

**CW ASSOCIATES, PLLC**

ARCHITECTURE • PLANNING • DEVELOPMENT SERVICES

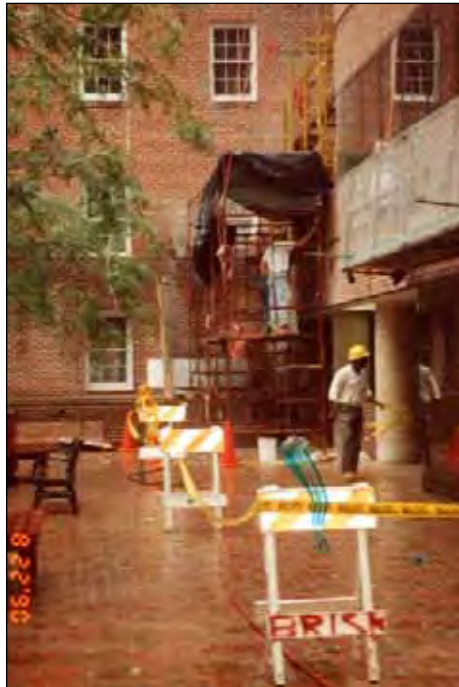
303-666-8941 [www.cwa-architect.com](http://www.cwa-architect.com)

# CWA



## THE FLOUR MILL BUILDINGS

Georgetown, Washington, DC  
Three Buildings / Nine Story Height  
Building Envelope Renovation -  
Membrane Roofs, Brick Tuckpointing,  
Remedial Window and Door Work &  
Plaza Deck Renovations. Previous  
experience of Chip Weincek with ESA



**CW ASSOCIATES, PLLC**  
ARCHITECTURE • PLANNING • DEVELOPMENT SERVICES  
303-666-8941 [www.cwa-architect.com](http://www.cwa-architect.com)